

## **OKI Printer Driver Compatibility**

OKI Printer Driver compatibility with Windows 8/Windows 8.1  
and Windows Server 2012 / Windows Server 2012 R2

Version: 5

Date: 17 Apr. 2014

Table of Contents	2
Introduction	3
Explanation of Terms	4
Color Printer	5
Mono Printer	9
Multi Function Printer	10
Dot Matrix Printer	14
Software Applications	15
Operating Condition	17
Note when upgrading to Windows 8.1	18

Following the launch of Windows 8/8.1 and Windows Server 2012/2012 R2, please find details of the compatibility of drivers and software applications related to OKI's portfolio of color, mono and dot matrix printers and multifunctional devices.

If your printer or MFP model is not listed, please contact your local OKI support representative.

- **means:** Supported
- ◇ **means:** Requires Driver Updater

If there is no • or ◇ in the box beside the product it means that the driver option is not supported.

## Built-in Driver

- Refers to the driver included in the Windows 8/8.1 operating system, these
- drivers are also referred to as "in-box drivers" or "in-OS drivers"
- Automatically installs for printers that are on a non-domain network with 30
- devices or less
- Most printers with a built-in driver use the OKI PCL6 Class Driver
- Supports x32, x64 and ARM
- This is the only driver option for Windows RT (ARM processor) tablets
- If Built-in Driver is Supported: The Windows 8 built-in driver at time of purchase
- can be used

## Windows Update:

- Automatically installs the driver when the computer has an internet connection

## OKI Driver\*

- Full feature driver available on the OKI website
- Supports x32 and x64 (\*\*may require Driver Updater)

\* There may be some feature limitations with the Windows 7/Vista driver under Windows 8 and Windows 8.1 operating system

\*\* Driver Updater (x64 only): This is the update program that allows you to use the driver for Windows 7 x64 on Windows 8 x64 and Windows Server 2012.

- Please install the Windows 7 x64 driver first and then run the driver updater (available on the website by searching for Utilities and Windows 8 x64).
- Double-click on the downloaded file and if "User Account Control" is displayed; click [Yes]. Then follow the steps to install the software.

## Windows Server 2012 / Windows Server 2012 R2

Windows Server 2012/Windows 2012 R2 only runs on 64-Bit processors, therefore please refer to the 64bit column only.

Model	Driver Type	Windows Built-in Driver	Windows Update Driver	OKI Driver availability				Note
				Win 7 / Vista		Win 8 / Win 8.1		
				32bit	64bit	32bit	64bit	
C301	GDI					•	•	
	XPS							
C310	GDI					•	•	
	XPS							
C3100	GDI							
C3200	GDI							
C321	PCL	•				•	•	
	PS					•	•	
	XPS							
C330	PCL	•				•	•	
	PS					•	•	
	XPS							
C3300	GDI			•	◇			
C331	PCL	•				•	•	
	PS					•	•	
	XPS							
C3400	GDI			•	◇			
C3450	GDI			•	◇			
C3600	PCL	•		•	•			4
	PS			•	•			4
	XPS							
C510	GDI					•	•	
	XPS							
C511	GDI					•	•	
	XPS							
C5100	GDI							
C5200	GDI							
C5250	GDI							
C530	PCL	•				•	•	
	PS					•	•	
	XPS							
C5300	PCL		•					1
	PS		•					
C531	PCL	•				•	•	
	PS					•	•	
	XPS							
C5400	PCL	•	•					
	PS		•					

• Supported      ◇ Requires Driver Updater

Model	Driver Type	Windows Built-in Driver	Windows Update Driver	OKI Driver availability				Note
				Win 7 / Vista		Win 8 / Win 8.1		
				32bit	64bit	32bit	64bit	
C5450	PCL	•						
	PS							
C5600	GDI			•	•			4
C5650	GDI			•	•			4
C5700	PCL	•		•	•			4
	PS			•	•			4
C5750	PCL	•		•	•			4
	PS			•	•			4
C5800	GDI			•	•			4
C5850	GDI			•	•			4
C5900	PCL	•		•	•			4
	PS			•	•			4
C5950	PCL	•		•	•			4
	PS			•	•			4
C610	PCL	•				•	•	
	PS					•	•	
	XPS							
C710	PCL	•		•	•			3,4
	PS			•	•			4
	XPS							
C7100	PCL		•					1
	PS		•					
C711	PCL	•				•	•	
	PS					•	•	
	XPS							
C711WT	PS			•	•			4
C7200	PCL		•					
	PS		•					
C7300	PCL		•					1
	PS		•					
C7350	PCL	•	•					
	PS		•					
C7400	PCL		•					
	PS		•					
C7500	PCL		•					1
	PS		•					
C801	GDI			•	•			4
	XPS							
C810	GDI					•	•	
	XPS							

• Supported    ♦ Requires Driver Updater

Model	Driver Type	Windows Built-in Driver	Windows Update Driver	OKI Driver availability				Note
				Win 7 / Vista		Win 8 / Win 8.1		
				32bit	64bit	32bit	64bit	
C821	PCL	•		•	•			3,4
	PS			•	•			4
	XPS							
C822	PCL	•				•	•	
	XPS							
C830	PCL	•				•	•	
	PS					•	•	
	XPS							
C831	PCL	•				•	•	
	PS					•	•	
	XPS							
C841	PCL	•				•	•	
	PS					•	•	
	XPS							
C8600	GDI					•	•	
C8800	PCL	•				•	•	
	PS		•			•	•	
C910	PCL	•				•	•	
	PS					•	•	
C920WT	PS			•	•			4
C9200	PCL		•					
	PS		•					
C930	PCL			•	•	not released	not released	4
	PS			•	•			
C9300	PCL		•					1
	PS		•					
C9400	PCL		•					
	PS		•					
C9500	PCL		•					1
	PS		•					
C9600	PCL	•		•	•			4
	PS			•	•			4
C9650	PCL	•		•	•			2,3,4
	PS			•	•			2,4
C9655	PCL	•		•	•			2,4
	PS			•	•			2,4
C9800	PCL			•	•			4
	PS			•	•			

• Supported      ◇ Requires Driver Updater

<b>C9850</b>	PCL			•	•			2,4
	PS			•	•			
<b>ES2032</b>	PCL	•		•	•			4
	PS			•	•			4
<b>ES2232</b>	PCL	•		•	•			4
	PS			•	•			4
<b>ES2426</b>	PCL	•						
	PS							
<b>ES2632a3</b>	PCL	•				•	•	
	PS					•	•	
<b>ES3032</b>	PCL	•		•	•			3,4
	PS			•	•			4
<b>ES3640</b>	PCL	•		•	•			4
	PS			•	•			4
<b>ES3640a3</b>	PCL	•		•	•			2,4
	PS			•	•			2,4
<b>ES3640 Pro</b>	PCL			•	•			4
	PS			•	•			
<b>ES5430</b>	PCL	•				•	•	
	PS					•	•	
	XPS							
<b>ES5431</b>	PCL	•				•	•	
	PS					•	•	
	XPS							
<b>ES6410</b>	PCL	•				•	•	
	PS					•	•	
	XPS							
<b>ES8430</b>	PCL	•		•	•			3,4
	PS			•	•			4
<b>ES8431</b>	PCL	•				•	•	
	PS					•	•	
	XPS							
<b>ES8441</b>	PCL	•				•	•	
	PS					•	•	
	XPS							



Model	Driver Type	Windows Built-in Driver	Windows Update Driver	OKI Driver availability				Note
				Win 7 / Vista		Win 8 / Win 8.1		
				32bit	64bit	32bit	64bit	
B2200	PCL					•	•	
B2400	PCL					•	•	
B401	PCL	•		•	•			
	XPS							
B410	PCL	•		•	•			
B4100	PCL		•					1
B411	PCL	•				•	•	
	XPS							
B4200	PCL		•					1
B4250	PCL		•					1
B430	PCL	•				•	•	
	PS					•	•	
B4300	PCL		•					1
	PS		•					
B431	PCL	•				•	•	
	PS	◇				•	•	
	XPS	◇						
B4350	PCL		•					1
	PS		•					
B440	PCL	•				•	•	
	PS					•	•	
B4400	PCL			•	•			1,4
B4600	PCL					•	•	
	PS					•	•	
B840	PCL	•				•	•	
	PS					•	•	
ES4131	PCL	•				•	•	
	PS					•	•	
	XPS							
ES4140	PCL	•				•	•	
	PS					•	•	
ES8140	PCL	•				•	•	
	PS					•	•	

• Supported      ◇ Requires Driver Updater

# Multi Function Printer (MFP)



Model	Driver Type	Windows Built-in Driver	Windows Update Driver	OKI Driver availability				Note
				Win 7 / Vista		Win 8 / Win 8.1		
				32bit	64bit	32bit	64bit	
C3520MFP	Scanner							
	GDI					•	•	
C3530MFP	Scanner							
	GDI					•	•	
	FAX			OKI Driver				
C5510MFP	Scanner							
	GDI							
C5540MFP	Scanner							
	PCL	•		•	•			4
	PS			•	•			4
C5550MFP	Scanner							
	PCL	•		•	•			4
	PS			•	•			4
C9800MFP	PCL			•	•			4
	PS			OKI Driver				
C9850MFP	PCL			•	•			4
	PS			OKI Driver				
	FAX			OKI Driver				
MB460	Scanner			OKI Driver				
	PCL	•		•	•			4
MB461	Scanner			OKI Driver				
	PCL	•				•	•	
	XPS							
MB470	Scanner			OKI Driver				
	PCL	•		•	•			4
	PS			•	•			4
	FAX			OKI Driver				
MB471	Scanner			OKI Driver				
	PCL	•				•	•	
	PS					•	•	
	XPS							
	FAX					OKI Driver		
MB480	Scanner			•	•			
	PCL	•		•	•			4
	PS			•	•			4
	FAX			•	•			

• Supported      ◇ Requires Driver Updater

# Multi Function Printer (MFP)



Model	Driver Type	Windows Built-in Driver	Windows Update Driver	OKI Driver availability				Note
				Win 7 / Vista		Win 8 / Win 8.1		
				32bit	64bit	32bit	64bit	
MB491	Scanner			OKI Driver				
	PCL	•				•	•	
	PS					•	•	
	XPS							
	FAX					OKI Driver		
MB760 MB770	Scanner			OKI Driver		OKI Driver		
	PCL			OKI Driver		OKI Driver		
	PS			OKI Driver		OKI Driver		
	XPS			OKI Driver		OKI Driver		
	FAX			OKI Driver		OKI Driver		
MC350	Scanner							
	GDI			•	•			4
MC351	Scanner			OKI Driver				
	PCL	•				•	•	
	PS					•	•	
	XPS							
MC352	Scanner					OKI Driver		
	PCL	•				•	•	
	PS					•	•	
	XPS							
MC360	Scanner							
	GDI			•	•			4
	FAX			•	•			
MC361	Scanner			OKI Driver				
	PCL	•				•	•	
	PS					•	•	
	XPS							
	FAX			OKI Driver				
MC362	Scanner					OKI Driver		
	PCL	•				•	•	
	PS					•	•	
	XPS							
	FAX					OKI Driver		
MC560	Scanner							
	PCL	•		•	•			4
	PS			•	•			4
	FAX			OKI Driver				

• Supported    ♦ Requires Driver Updater

# Multi Function Printer (MFP)



Model	Driver Type	Windows Built-in Driver	Windows Update Driver	OKI Driver availability				Note
				Win 7 / Vista		Win 8 / Win 8.1		
				32bit	64bit	32bit	64bit	
MC561	Scanner			OKI Driver				
	PCL	•				•	•	
	PS					•	•	
	XPS							
	FAX			OKI Driver				
MC562	Scanner					OKI Driver		
	PCL	•				•	•	
	PS					•	•	
	XPS							
	FAX					OKI Driver		
MC760 MC770 MC780	Scanner			OKI Driver		OKI Driver		
	PCL			OKI Driver		OKI Driver		
	PS			OKI Driver		OKI Driver		
	XPS			OKI Driver		OKI Driver		
	FAX			OKI Driver		OKI Driver		
MC851	Scanner			OKI Driver				
	PCL	•		•	•			4
	PS			•	•			4
	FAX			OKI Driver				
MC860	Scanner			OKI Driver				
	PCL	•				•	•	
	PS					•	•	
	XPS							
	FAX			OKI Driver				
MC861	Scanner			OKI Driver				
	PCL	•		•	•			4
	PS			•	•			4
	XPS							
	FAX			OKI Driver				
ES1624MFP	Scanner							
	PCL	•		•	•			4
	PS			•	•			4
ES2032MFP	Scanner							
	PCL	•		•	•			4
	PS			•	•			4
ES3451MFP	Scanner			OKI Driver				
	PCL	•				•	•	
	PS					•	•	
	XPS							

• Supported    ♦ Requires Driver Updater

# Multi Function Printer (MFP)



Model	Driver Type	Windows Built-in Driver	Windows Update Driver	OKI Driver availability				Note
				Win 7 / Vista		Win 8 / Win 8.1		
				32bit	64bit	32bit	64bit	
ES3452 MFP	Scanner					OKI Driver		
	PCL	•				•	•	
	PS					•	•	
	XPS							
ES3640 MFP	PCL			•	•			4
	PS			OKI Driver				
ES7170	Scanner			OKI Driver		OKI Driver		
	PCL			OKI Driver		OKI Driver		
	PS			OKI Driver		OKI Driver		
	XPS			OKI Driver		OKI Driver		
	FAX			OKI Driver		OKI Driver		
ES7470 ES7480	Scanner			OKI Driver		OKI Driver		
	PCL			OKI Driver		OKI Driver		
	PS			OKI Driver		OKI Driver		
	XPS			OKI Driver		OKI Driver		
	FAX			OKI Driver		OKI Driver		
ES9160 ES9170	PCL			OKI Driver		OKI Driver		
	PS			OKI Driver		OKI Driver		
	XPS			OKI Driver		OKI Driver		
	FAX			OKI Driver		OKI Driver		
ES9460 ES9470	PCL			OKI Driver		OKI Driver		
	PS			OKI Driver		OKI Driver		
	XPS			OKI Driver		OKI Driver		
	FAX			OKI Driver		OKI Driver		
ES9455 ES9465 ES9475	Scanner			OKI Driver		Windows 8: Use OKI Driver Windows 8.1: Not supported		
	PCL			OKI Driver		OKI Driver		
	PS			OKI Driver		OKI Driver		
	XPS			OKI Driver		OKI Driver		
	FAX			OKI Driver		OKI Driver		

• Supported      ◇ Requires Driver Updater

Model	Built-in Driver	Windows Update	OKI Support	Note
ML280elite	•	•		
ML320elite		•		
ML321elite		•		
ML380elite		•		
ML390elite		•		
ML391elite		•		
ML393elite		•		
ML395elite		•		
ML520elite		•		
ML521elite		•		
ML3320	•	•	Use the latest driver in CD or web site	
ML3321	•	•	Use the latest driver in CD or web site	
ML3390	•	•	Use the latest driver in CD or web site	
ML3391	•	•	Use the latest driver in CD or web site	
ML3410elite		•		
ML5100FB	•		Use the latest driver in CD or web site	
ML5520	•	•	Use the latest driver in CD or web site	
ML5521	•	•	Use the latest driver in CD or web site	
ML5590	•	•	Use the latest driver in CD or web site	
ML5591	•	•	Use the latest driver in CD or web site	
ML6300FB	•	•	Use the latest driver in CD or web site	
ML6300FB-SC	•		Use the latest driver in CD or web site	

**Note 1:**

You may be able to select this model using the Windows 8 and Windows 8.1 built-in driver, however although the driver will appear to have installed, nothing will print. For this reason, the model is displayed as 'Not Supported'.

**Note 2:**

The Driver Installer is contained in the web package; therefore it cannot be completed by USB installation. To close the Driver Installer window awaiting PnP, you need to click the Cancel button thereafter the PnP.

**Note 3:**

Printing is disabled from the MPT (Multi-Purpose Tray) in Windows Store apps. To print from MPT, select MPT for Source on the printer's operator panel and then select [Automatically Select] for Source before printing.

**Note 4:**

Windows 8/ 8.1 64bit/Windows Server 2012/Windows Server 2012 R2: Use the driver for Windows 7. Install OKI Driver Updater [0001] after you install the driver for Windows 7.

Please find below the scheduled availability of updated software applications.

- No shortcut will be added to the Metro UI at installation unless a file extension is EXE.
- An uninstaller shortcut is not added to the Metro UI.
- No plan to support utilities in Windows RT.

	Application	Availability of updated software	Note
Server	Print Job Accounting	Support under consideration	A
	Print Job Accounting Enterprise	Support under consideration	A
	PrintSuperVision (.NET)	Support under consideration	
	PrintSuperVision (ME) *Japan only	The current version posted on the Web can be used with restrictions.	A, E
	Web Driver Installer	The current version posted on the Web can be used with restrictions.	A, E
Setting	Configuration Tool	The current version posted on the Web can be used with restrictions.	A
	Colour Access Policy Manager	No plan to support	
	MFP Setup Tool	No plan to support	
	Network Card Setup	Released	
	Network Setup Tool	No plan to support	
	Panel Language Setup	The current version posted on the Web can be used with restrictions.	B
	Printer Menu Setup Tool	The current version posted on the Web can be used with restrictions.	A
	Storage Device Manager	The current version posted on the Web can be used with restrictions.	A
Monitoring	Color Correct Utility	No plan to support	
	Status Monitor	C3400n : The current version posted on the Web can be used with restrictions.	A, D
		B2200 : The current version posted on the Web can be used with restrictions.  Other : Support under consideration. There exist some restrictions if the current version posted on the Web is used.	A, C, D



	Application	Availability of updated software	Note
Print Support	Colour Correct Utility	The current version posted on the Web can be used with restrictions.	A
	Colour Swatch Utility	The current version posted on the Web can be used with restrictions.	A
	LPR Utility (OKILPR)	The current version posted on the Web can be used with restrictions.	A
	Network Extension	Released	A
	PDF Direct Print	Released	A
	Print Job Accounting Client	Released	
	Profile Assistant	The current version posted on the Web can be used with restrictions.	A
	PS Gamma Adjuster	Released	A
	Template Manager	Released	
	ActKey	Released	
Solution	AddressBook Viewer	Use the latest version posted on the Web.	A
	File Downloader	Use the latest version posted on the Web.	A
	e-Filing Backup-Restore	Use the latest version posted on the Web.	A
	Remote Scan driver	Use the latest version posted on the Web.	A
3rd-Party Solution	Hot Folder (v3)	Support under consideration	
	Command Workstation 4	Support under consideration	
	Command Workstation 5	Support under consideration	
	Network Card Setup (AdminManager)	Support under consideration	
	OKI Dot Impact Printer Utilities [OKI DIPUS]	Use the latest version posted on the Web.	
	OKI C3520MFP/C3530MFP/MC350/MC360	No plan to support	A
	HotKey(C3520/30MFP , MC350/360)	No plan to support	
	PaperPort	Support under consideration	
	OmniPage	Support under consideration	
	C110 Remote Panel Utility	Support under consideration	
	C130 Status Panel Utility	Support under consideration	
	MC160 Setup Utility	Support under consideration	
	MC160 Scanner Utility	Support under consideration	

- Supported
- ◇ Requires Driver Updater

## Operating Condition

**Note A:**

If the "Program Compatibility Assistant" dialog appears upon installation completion (including cancellation of installation), ensure to click [This program has successfully been installed]. When an installer or utility is launched, the [User Account Control] dialog will sometimes appear. Click [Yes] as it is necessary to run an installer or utility with permissions for administrators. With [No] clicked, neither the installer nor utility will launch.

**Note B:**

A supported version of the printer driver will become necessary.

**Note C:**

Print does not prompt it to automatically launch.

**Note D:**

Shortcut will NOT be added automatically at Start Screen when installing. It needs to be added manually.

**Note E:**

Windows Server 2012 R2: The expansion protected mode of Internet Explorer 11 is ON, so Web page cannot open.

## Note when upgrading to Windows 8.1

### 1. Windows 7 to Windows 8.1

Printer Driver cannot be kept. (Automatically deleted) (See figure 2)

\* Not only Oki but also the competitors will have same situation.

### 2. Windows 8 to Windows 8.1

If you choose "Keep Windows settings, personal files, and apps", Printer Driver will exist.  
(See figure 1)



Figure 1: Win 7 » Win 8 / Win 8 » Win 8.1

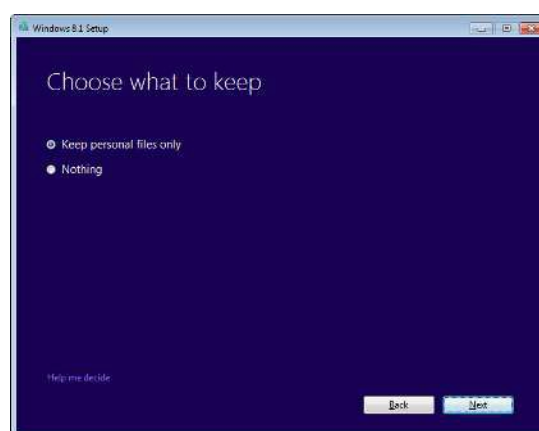


Figure 2: Win 7 » Win 8.1

Item	Win 7 » Win 8 / Win 7.1 » Win 8.1	Win 7 » Win 8.1
Keep Windows settings, personal files, and apps	Printer driver exist	N/A
Keep Personal file only	Printer driver deleted	Printer driver deleted
Nothing	Printer driver deleted	Printer driver deleted

- Supported
- ◇ Requires Driver Updater